

Camden Council Top Level Structure Chart



Chief Executive
Jon Rowney



Executive Directors
Corporate Services (Joint, Interim)
**Kathryn Myers & Hanad
Mohamed**



Executive Director
(Deputy Chief
Executive)
Adults and Health
Jess McGregor



Executive Director
(Deputy Chief
Executive)
Children and Learning
Tim Aldridge



Executive Director
Investment Place and
Opportunity
David Burns



Executive Director
Homes and Communities
Gillian Marston



Borough Solicitor
Andrew Maughan



Director of Health
and Wellbeing
Kirsten Watters



Director of People
& Inclusion
Joanna Brown



Director of Corporate
Strategy, Design and
Insight
Osian Jones

Last updated: 1 August 2025

Executive Director Corporate Services (Interim)
Kat Myers

**Participation,
Partnerships &
Communications**

Caroline Kennedy
(Interim)

**Strategic
Communications**

**Media & External
Relations**

**Participation &
Partnerships**

Member Support

Chief Executive Office

Cabinet Office

**Community
Partnerships**

**Strategy Design &
Insight**

Osian Jones

**Head of Corporate
Strategy**

Service & Policy Design

**Strategic Delivery &
Operations**

**Insights, Learning and
Impact**

**Principal Policy &
Projects Officer**

Head of Strategy

Finance
[Section 151 Officer]

Daniel Omisore

**Strategic Finance &
Business Partnering**

Heads of Finance

**Treasury, Pensions &
Financial Transactions**

Chief Accountant

**Internal Audit,
Investigations
& Risk**

**Council Tax, Business
Rates & Benefits**

**Credit Control &
Income Management**

Executive Director Corporate Services (Interim)
Hanad Mohamed

**Chief Experience &
Information Officer**

Tariq Khan

**Digital Products and
Services**

Chief Data Officer

Engineering

Operations

Technology

**Customer &
Registration Services**

**Borough Solicitor,
Law & Governance
[Monitoring Officer]**

Andrew Maughan

**Legal Services &
Deputy Borough
Solicitor**

Business Support

Democratic Services

Electoral Services

Mayor's Office

**Equality & Community
Strength**

Hanad Mohamed

**Equalities & Social
Purpose**

Refugee Communities

**Debt & Financial
Resilience**

People & Inclusion

Jo Brown
(Reporting to Deputy
Chief Executive)

**People Relationship
Leads**

People Operations Lead

**Inclusion Cultural
Change**

**Innovation, Insight &
Learning**

**Relational Practise &
Leadership**

**Employment & Total
Reward**

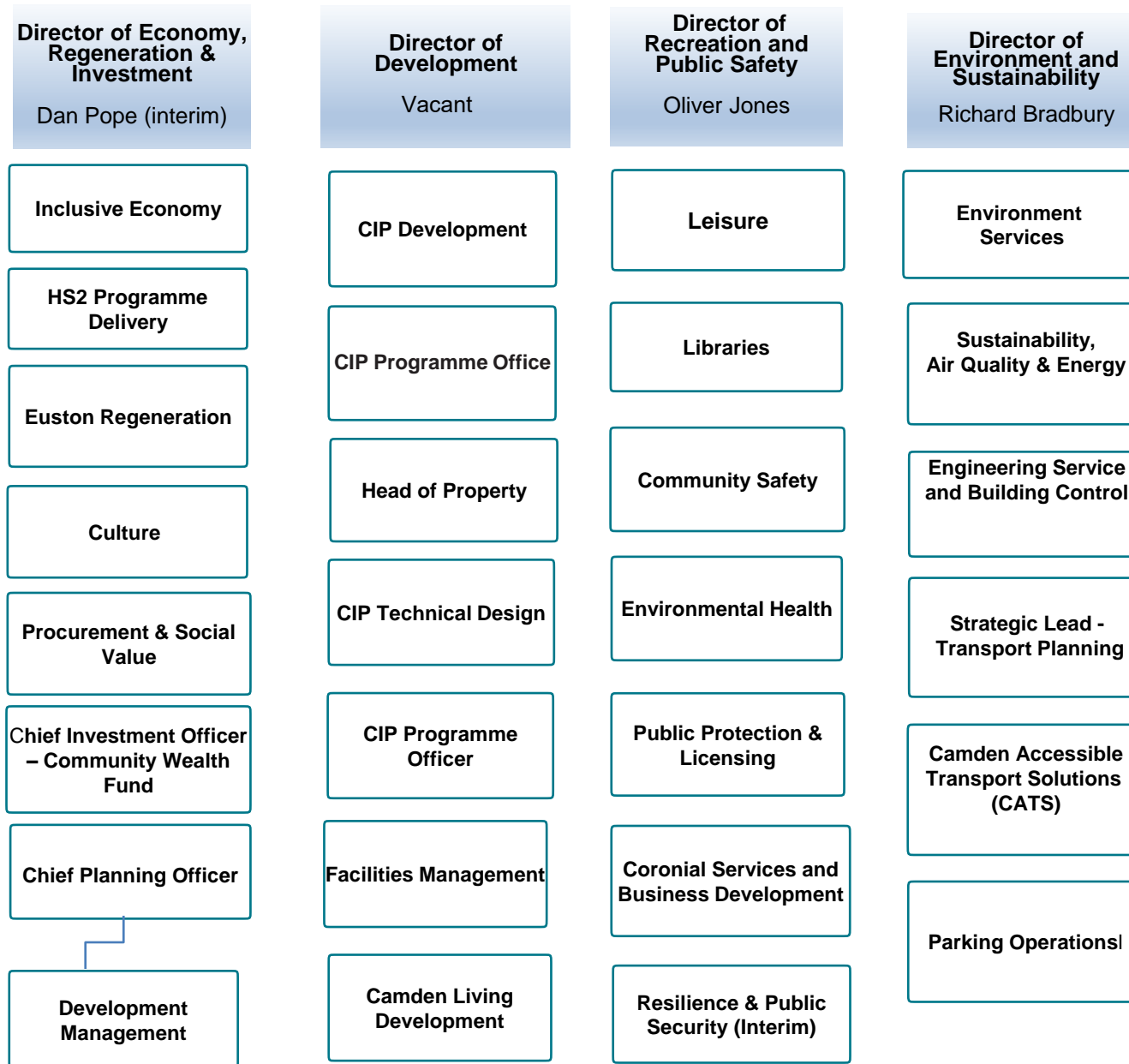
Health & Safety

Employee Relations

Resourcing

Executive Director Investment, Place and Opportunity

David Burns



Executive Director Homes and Communities

Gillian Marston (Current Structure)

Director of Property Management

Gavin Haynes

Capital Works

Repairs & Operations

Strategic Asset Management and Compliance

Property Customer Services & Engagement

Safer Homes

Resident Safety Engagement

Chalcots

Director of Housing

Glendine Shepherd

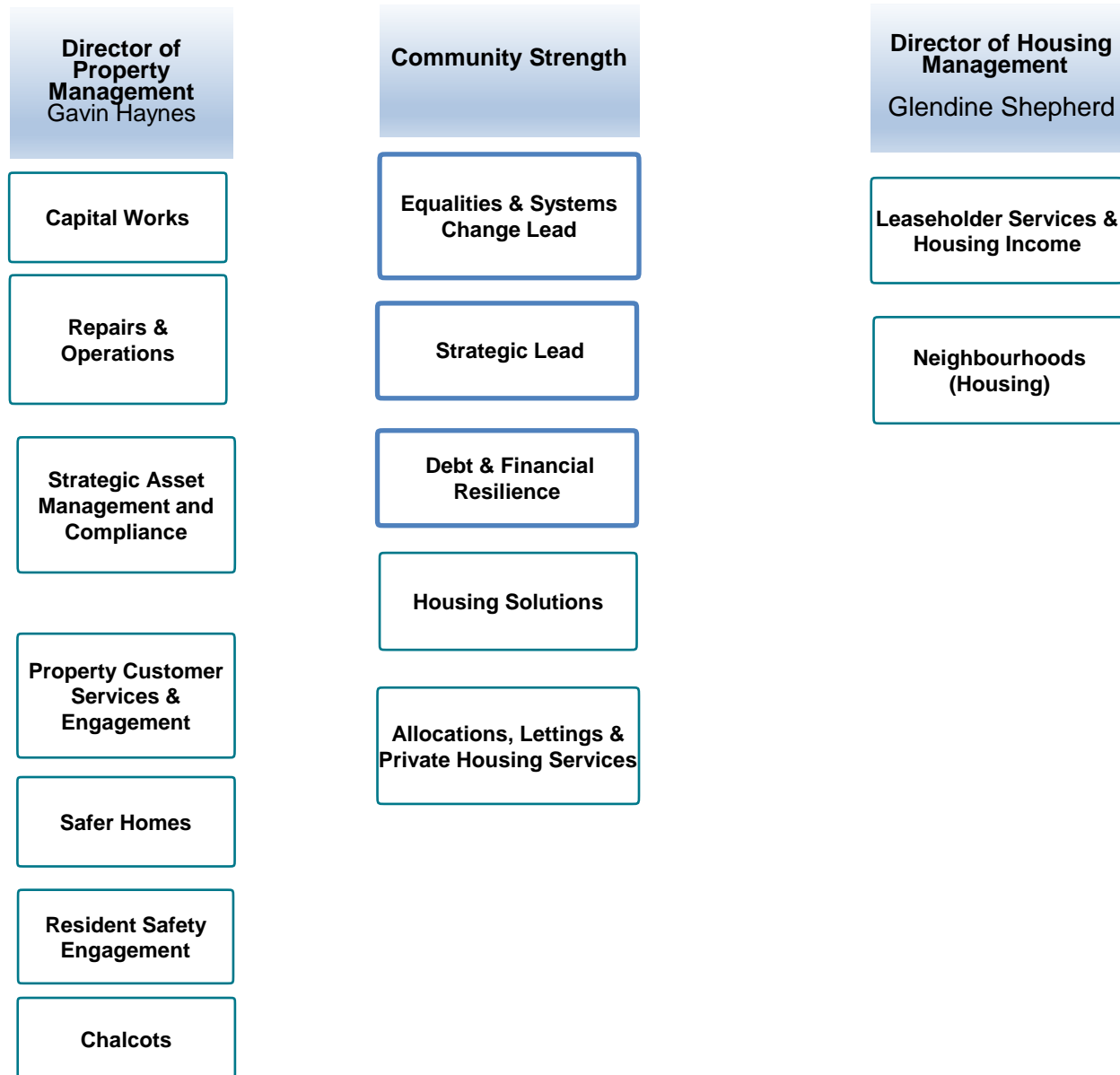
Leaseholder Services & Housing Income

Neighbourhoods (Housing)

Housing Solutions

Allocations, Lettings & Private Housing Services

Executive Director Homes and Communities
Dan Hawthorn (structure in February 2026)



Executive Director, Adults and Health [statutory DASS]
Jess McGregor

**Director of ASC Operations
and Deputy DASS**
Avril Mayhew

**Head of Integrated Learning
Disability Service**

**Head of Integrated
Neighbourhoods**

Head of ASC Neighbourhoods

**Head of ASC Insight, Quality and
Financial Services**

Principal Social Worker

**Head of NHS Foundation Trust at
Camden**

**Service Manager, Approved
Mental Health Service**

**Director of ASC Strategy and
Commissioning and Deputy
DASS**
Chris Lehmann

Head of Adults Commissioning

**Head of Learning Disability
Autism and Mental Health**

**Head of Adult Social Care
Innovation**

Head of Provider Services

Director of Health & Wellbeing
Kirsten Watters

**Deputy Director of
Health & Wellbeing
Behavioural Insights &
Public Realm**

**Child Health Equity,
Strategy and
Partnerships
Consultant in Public
Health**

**Child Health Equity,
Strategy and
Partnerships
Consultant in Public
Health**

**Head of Early Years,
Schools and Families
Health**

**Head of Children's
Commissioning & Health
Partnerships**

**Deputy Director of
Health & Wellbeing
Healthy Lives**

**Head of Drugs, Alcohol
& Sexual Health**

**Health & Care,
Intelligence & Protection
Consultant in Health
Medicine**

**Head of Population
Intelligence & Statistical
Methods**

**Partnership Director
North London Councils**

**London ADASS
Programme Director**

**North London NHS
Foundation Trust**

Executive Director, Children and Learning [statutory DCS]
Tim Aldridge

**Director of Children's Prevention,
Safeguarding and Family Help**

Rashida Baig

Children in Need

Integrated
Youth Service

Early Years

Family Support & Complex Families
(interim)

Looked After Children and Care
Leavers

Children & Young People Disability
Service

**Director of Education
Commissioning and Inclusion**

Vikram Hansrani

Virtual School Head
(Interim)

Special Educational
and Inclusion
Intervention Service

Education, Commissioning &
School Organisation

Adult
Community Learning

Education Transformation
(Interim)

Director of Relational Practice

Nana Bonsu

Practice and Learning

Children and Learning
Transformation

London Resettlement Partnership &
LARP

Quality Assurance

Violence against Women and Girls

Systemic Lead

**Chief Executive
Camden Learning**
Stephen Hall

**Head of Business Development &
Communications**

Director of STEAM & Partnerships

**Senior Advisor Safeguarding &
Inclusion**

Director of Learning

**Head of Governor Services &
Company Secretary**

**Head of Finance & Business
Systems**